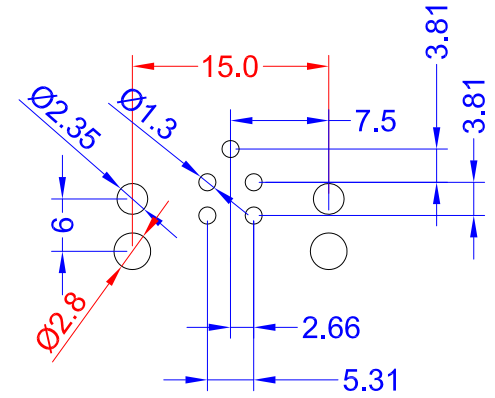
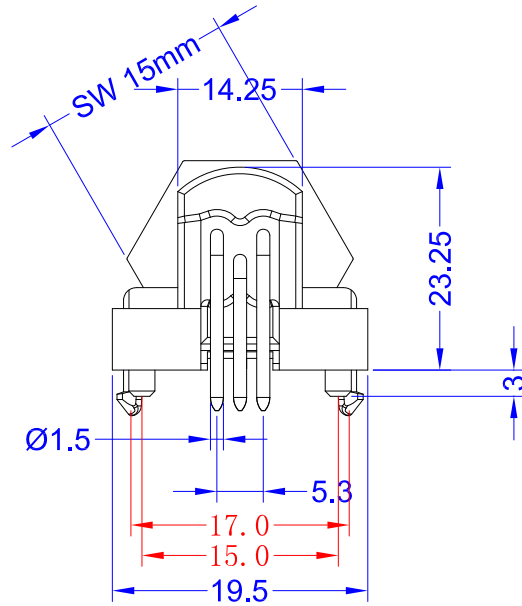
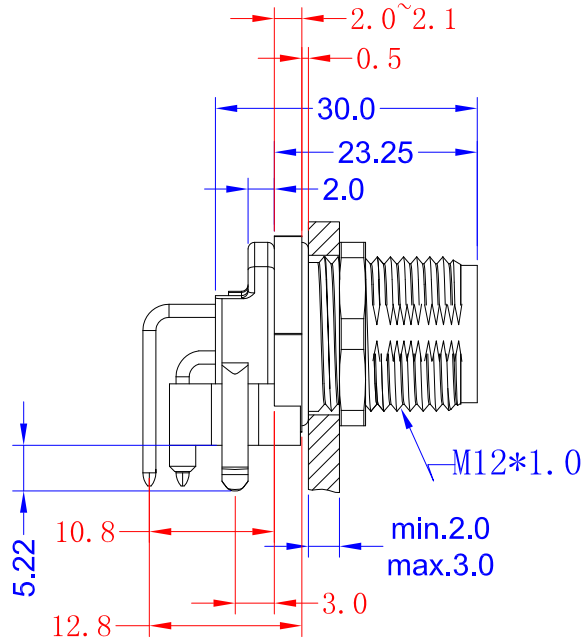
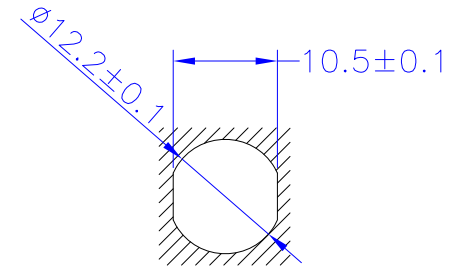


MOLD NO. RFQ NO.: FCL004

REV.	DESCRIPTION	APPD.	DATE
A	INITIAL RELEASED	WANG	07/24/14'



View of mating side PCB



Panel hole size

Detailed Product Description:
 Waterproof connector rating is IP67/IP68
 Protected from dust and water during immersion
 resistant to many oils and chemical etc

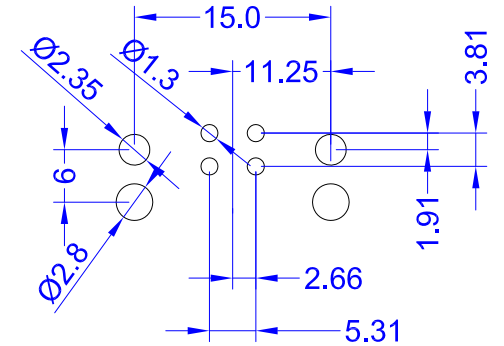
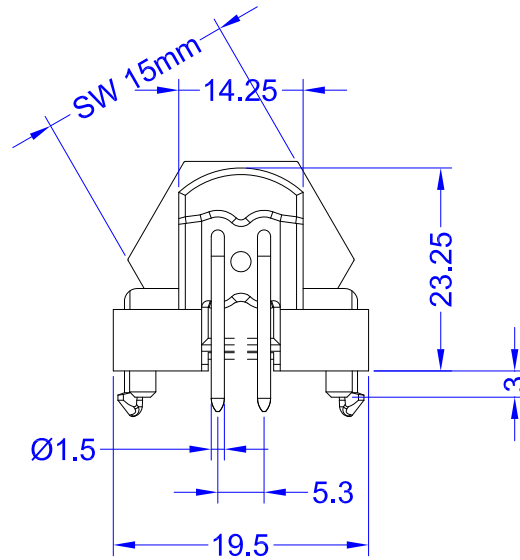
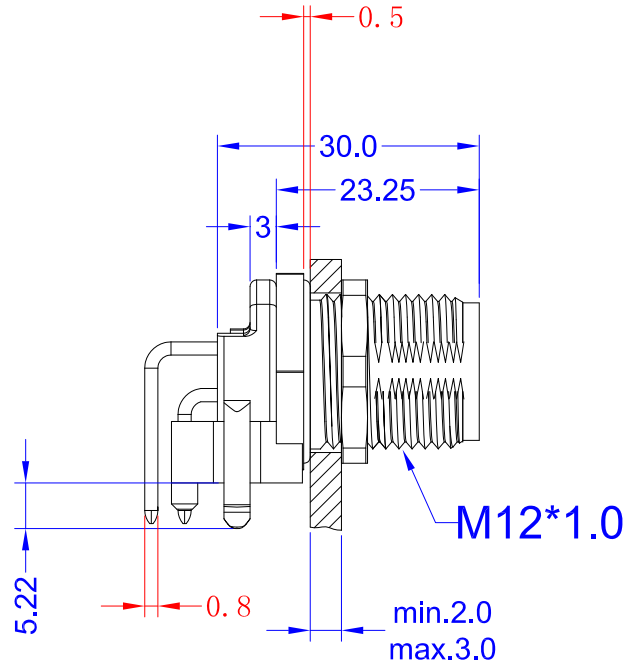
Connector Electrical character
 Rating voltage: 60 V AC/DC ,
 Insulation resistance: >100MΩ
 Rating current : 2A
 Contact resistance of the connector ≤3mΩ

Other Specification
 Contact PIN: Brass with Gold plating.
 Coupling nut/screw: Brass with nickel plating
 Insulation plastic: PA66+GF
 Degree of protection: IP67/IP68
 Operating temperature: -25°C ~ +85°C

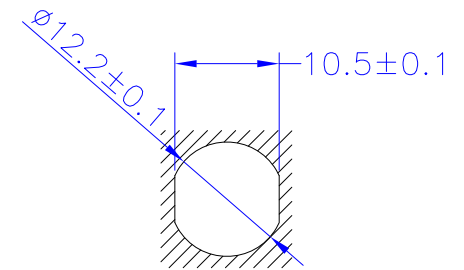
*ALL MATFRIALS ARF RoHS COMPLIANT.

UNDECLARED TOLERANCE		CUS P/N:	JH-COM PRECISION INDUSTRY (CHINA) CO., LIMITED					
X.±1.0	X.*±2.0'	PART NO.: 92032-05				TITLE: M12 A Coding 5pin male connector front mount 90degree		
.X±0.5	.X*±1.0'					DWG NO.: B0003		
.XX±0.2	.XX*±0.5'	APPD.:	DR.:					
UNITS: MM		CHKD.:	SCALE SHEET REV.					
THESE DRAWINGS AND SPECIFICATIONS ARE THE PROPERTY OF JH-COM AND SHALL NOT BE REPRODUCED, COPIED OR USED IN ANY MANNER WITHOUT THE PRIOR WRITTEN CONSENT OF JH-COM		DR.: HWJ_07/24/14'		1:1	1/1	A		

ITEM	PART NAME	DESCRIPTION	QTY
------	-----------	-------------	-----



View of mating side PCB



Panel hole size

Detailed Product Description:

Waterproof connector rating is IP67/IP68
 Protected from dust and water during immersion,
 resistant to many oils and chemical etc

Connector Electrical character

Rating voltage: 250V AC/DC ,
 Insulation resistance: >100MΩ
 Rating current : 3A
 Contact resistance of the connector ≤3mΩ

Other Specification

Contact PIN: Brass with Gold plating.
 Coupling nut/screw: Brass with nickel plating
 Insulation plastic: PA66+GF
 Degree of protection: IP67/IP68
 Operating temperature: -25°C ~ +85°C

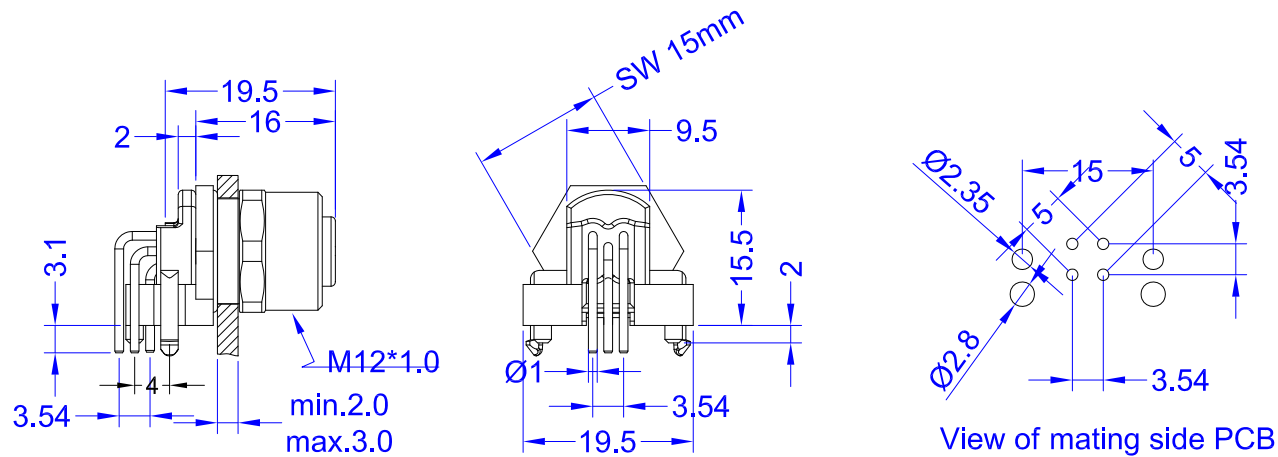
*ALL MATERIALS ARE RoHS COMPLIANT.

UNDECLARED TOLERANCE		CUS P/N:	骏慧兴业科技有限公司 Shenzhen JH-C Technology CD		
X.±1.0	X.*±2.0'	PART NO.: 92001-04	TITLE: M12 4PIN 90 PCB		
.X±0.5	.X*±1.0'		DWG NO.: D0001		
.XX±0.2	.XX*±0.5'		SCALE SHEET REV. 1:1 1/1 A		
UNITS: MM		APPD.:	DRG NO.: D0001		
THESE DRAWINGS AND SPECIFICATIONS ARE THE PROPERTY OF JH-COM AND SHALL NOT BE REPRODUCED, COPIED OR USED IN ANY MANNER WITHOUT THE PRIOR WRITTEN CONSENT OF JH-COM		CHKD.:	DR.: HWJ_07/24/14'		

ITEM	PART NAME	DESCRIPTION	QTY
------	-----------	-------------	-----

MOLD NO. RFQ NO.: FCL004

REV.	DESCRIPTION	APPD.	DATE
A	INITIAL RELEASED	WANG	07/24/14'



Detailed Product Description:

Waterproof connector rating is IP67/IP68
 Protected from dust and water during immersion,
 resistant to many oils and chemical etc

Connector Electrical character

Rating voltage: 30 V AC/DC ,
 Insulation resistance: >100MΩ
 Rating current : 3A
 Contact resistance of the connector ≤ 3mΩ

Other Specification

Contact PIN: Brass with Gold plating.
 Coupling nut/screw: Brass with nickel plating
 Insulation plastic: PA66+GF
 Degree of protection: IP67/IP68
 Operating temperature: -25°C ~ +85°C

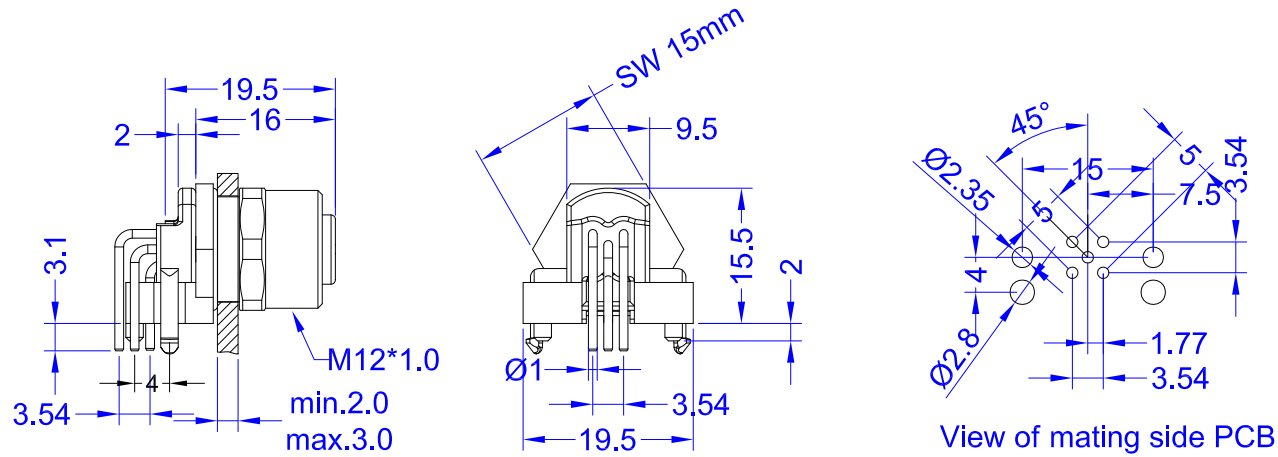
*ALL MATERIALS ARE RoHS COMPLIANT.

UNDECLARED TOLERANCE		CUS P/N:	骏慧兴业科技有限公司 Shenzhen JH-C Technology CD		
X.±1.0	X.*±2.0'	PART NO.: 92033-04	TITLE: M12 A Coding 5pin female connector front mount 90degree		
.X±0.5	.X*±1.0'		DWG NO.: D0044		
.XX±0.2	.XX*±0.5'		SCALE SHEET REV. 1:1 1/1 A		
UNITS: MM		APPD.:	DR.: HWJ_07/24/14'		
THESE DRAWINGS AND SPECIFICATIONS ARE THE PROPERTY OF JH-COM AND SHALL NOT BE REPRODUCED, COPIED OR USED IN ANY MANNER WITHOUT THE PRIOR WRITTEN CONSENT OF JH-COM					

ITEM	PART NAME	DESCRIPTION	QTY
------	-----------	-------------	-----

MOLD NO. RFQ NO.: FCL004

REV.	DESCRIPTION	APPD.	DATE
A	INITIAL RELEASED	WANG	07/24/14'



Detailed Product Description:

Waterproof connector rating is IP67/IP68
 Protected from dust and water during immersion,
 resistant to many oils and chemical etc

Connector Electrical character

Rating voltage: 30 V AC/DC ,
 Insulation resistance: >100MΩ
 Rating current : 3A
 Contact resistance of the connector ≤3mΩ

Other Specification

Contact PIN: Brass with Gold plating.
 Coupling nut/screw: Brass with nickel plating
 Insulation plastic: PA66+GF
 Degree of protection: IP67/IP68
 Operating temperature: -25°C ~ +85°C

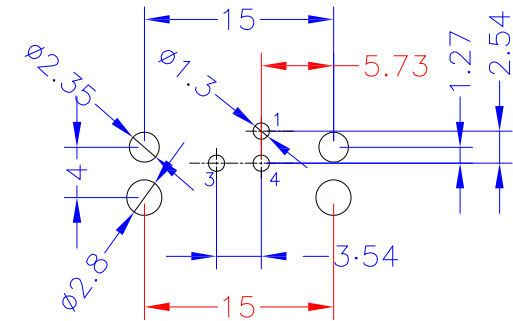
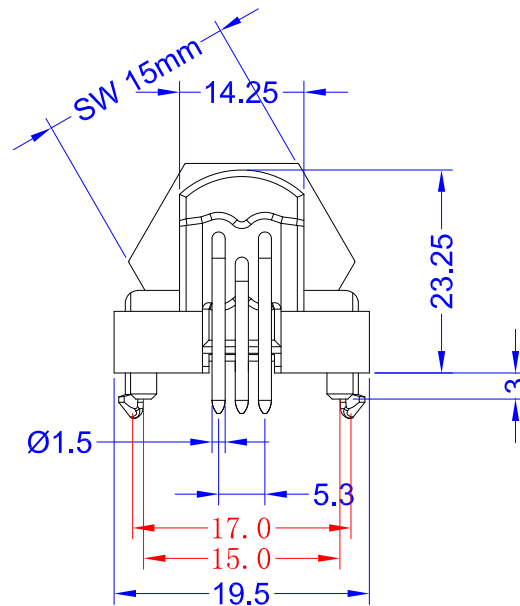
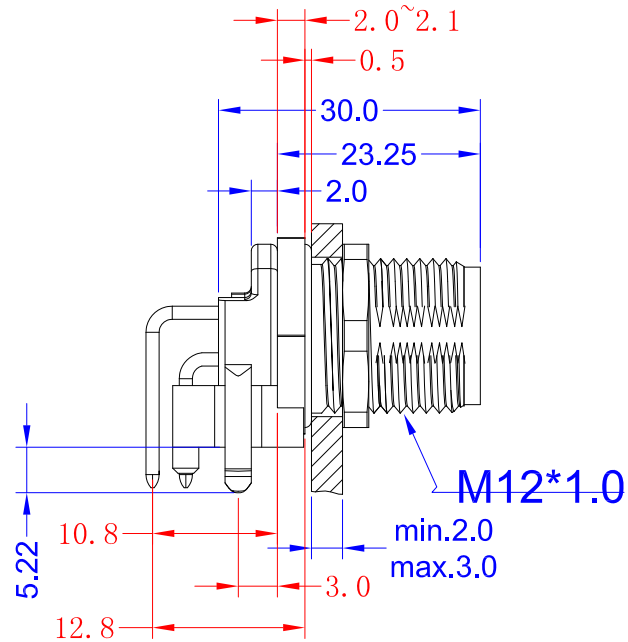
*ALL MATERIALS ARE RoHS COMPLIANT.

UNDECLARED TOLERANCE		CUS P/N:	骏慧兴业科技有限公司 Shenzhen JH-C Technology CD		
X.±1.0	X.*±2.0'	PART NO.: 92033-05	TITLE: M12 A Coding 5pin female connector front mount 90degree		
.X±0.5	.X*±1.0'		DWG NO.: D0044		
.XX±0.2	.XX*±0.5'		SCALE SHEET REV. 1:1 1/1 A		
UNITS: MM		APPD.:	DR.: HWJ_07/24/14'		
THESE DRAWINGS AND SPECIFICATIONS ARE THE PROPERTY OF JH-COM AND SHALL NOT BE REPRODUCED, COPIED OR USED IN ANY MANNER WITHOUT THE PRIOR WRITTEN CONSENT OF JH-COM.		CHKD.:			

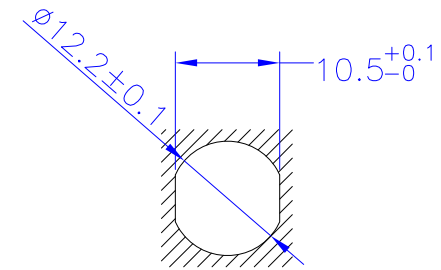
ITEM	PART NAME	DESCRIPTION	QTY
------	-----------	-------------	-----

MOLD NO. RFQ NO.: FCL004

REV.	DESCRIPTION	APPD.	DATE
A	INITIAL RELEASED	WANG	07/24/14'



View of mating side PCB



Panel hole size

Detailed Product Description.
 Waterproof connector rating is IP67/IP68
 Protected from dust and water during immersion,
 resistant to many oils and chemical etc

Connector Electrical character
 Rating voltage: 250V AC/DC ,
 Insulation resistance: >100MΩ
 Rating current : 3A
 Contact resistance of the connector ≤3mΩ

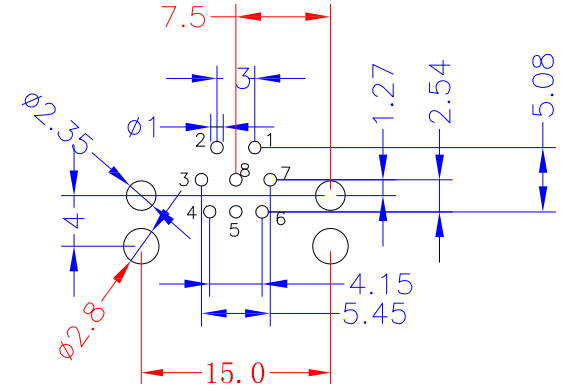
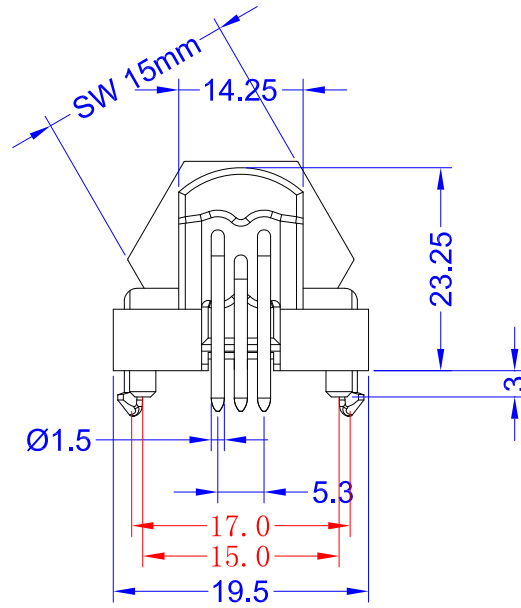
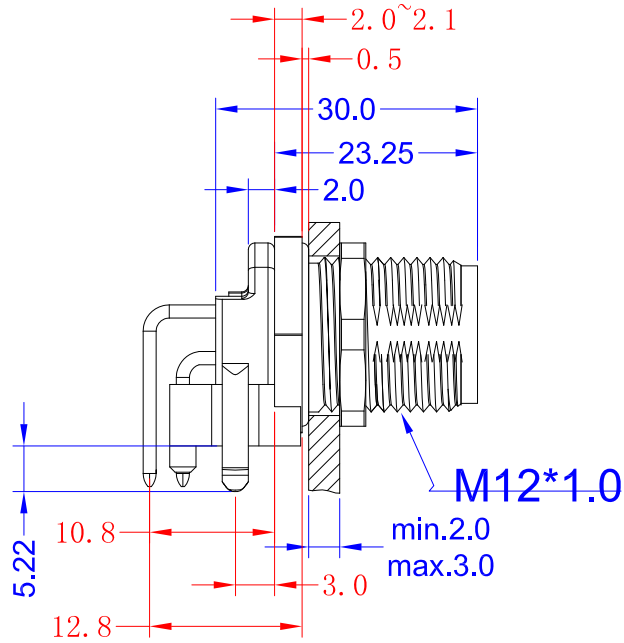
Other Specification
 Contact PIN: Brass with Gold plating.
 Coupling nut/screw: Brass with nickel plating
 Insulation plastic: PA66+GF
 Degree of protection: IP67/IP68
 Operating temperature: -25°C ~ +85°C

ALL MATERIALS ARE RoHS COMPLIANT.

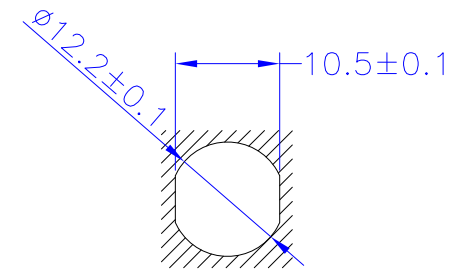
UNDECLARED TOLERANCE		CUS P/N:	JH-COM PRECISION INDUSTRY (CHINA) CO., LIMITED		
X.±1.0	X.*±2.0'	PART NO.: 92001-03	TITLE: M12 3PIN 90 PCB		
.X±0.5	.X*±1.0'		DWG NO.: B0004		
.XX±0.2	.XX*±0.5'		SCALE SHEET REV. 1:1 1/1 A		
UNITS: MM		APPD.:	DRG NO.: B0004		
THESE DRAWINGS AND SPECIFICATIONS ARE THE PROPERTY OF JH-COM AND SHALL NOT BE REPRODUCED, COPIED OR USED IN ANY MANNER WITHOUT THE PRIOR WRITTEN CONSENT OF JH-COM		CHKD.:	SCALE SHEET REV. 1:1 1/1 A		
		DR.:	HWJ_07/24/14'		

ITEM	PART NAME	DESCRIPTION	QTY
------	-----------	-------------	-----

REV.	DESCRIPTION	APPD.	DATE
A	INITIAL RELEASED	WANG	07/24/14'



View of mating side PCB



Panel hole size

Detailed Product Description:
 Waterproof connector rating is IP67/IP68
 Protected from dust and water during immersion,
 resistant to many oils and chemical etc

Connector Electrical character
 Rating voltage: 30 V AC/DC ,
 Insulation resistance: >100MΩ
 Rating current : 3A
 Contact resistance of the connector ≤3mΩ

Other Specification
 Contact PIN: Brass with Gold plating.
 Coupling nut/screw: Brass with nickel plating
 Insulation plastic: PA66+GF
 Degree of protection: IP67/IP68
 Operating temperature: -25°C ~ +85°C

*ALL MATERIALS ARE RoHS COMPLIANT.

UNDECLARED TOLERANCE		CUS P/N:	JH-COM PRECISION INDUSTRY (CHINA) CO., LIMITED			
X.±1.0	X.*±2.0'					
.X±0.5	.X*±1.0'	PART NO.:	TITLE: M12 8PIN 90 PCB			
.XX±0.2	.XX*±0.5'	92001-08				
UNITS: MM		APPD.:	DWG NO.: B0004			
THESE DRAWINGS AND SPECIFICATIONS ARE THE PROPERTY OF JH-COM AND SHALL NOT BE REPRODUCED, COPIED OR USED IN ANY MANNER WITHOUT THE PRIOR WRITTEN CONSENT OF JH-COM		CHKD.:		SCALE	SHEET	REV.
		DR.: HWJ_07/24/14'		1:1	1/1	A

ITEM	PART NAME	DESCRIPTION	QTY
------	-----------	-------------	-----